



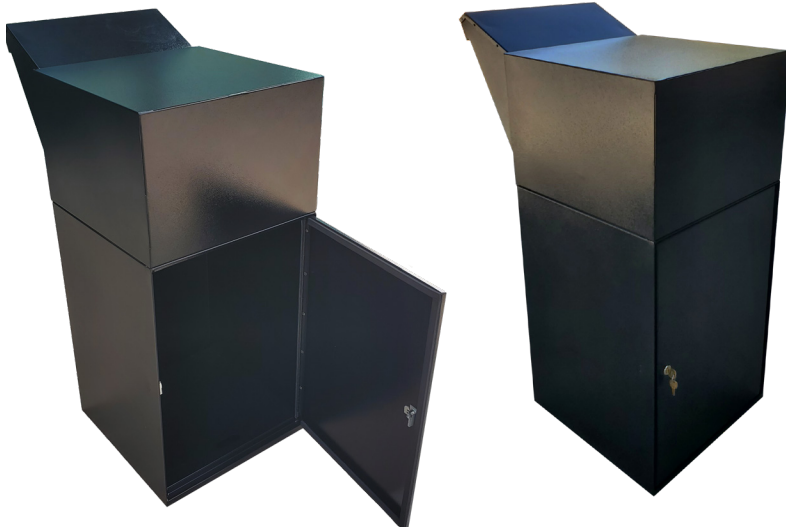
DVCS0019 Ballot Box Vault



The Ballot Box Vault is a safe and secure receptacle for collecting and storing ballots or other letter-sized items. Its slanted, narrow mouth protects against weather and theft, while allowing easy drive-by or walk-up ballot drop-offs. This sturdy, large capacity unit safely stores a large number of ballots between collections. An optional, easy access, plastic bin is available separately to assist with ballot retrieval and transport. This is an ideal unit for municipalities, counties, and states to help conduct tamper-proof elections.

Standard Features

- Made of 16 gauge galvanized steel.
- Rear locking access door for convenient ballot retrieval.
- Secure posi lock on access door resists pry attacks.
- Commercial grade powder coat finish resists rust.
- Available colors: black or white.
- Stainless steel hinges.
- Sturdy, full welds for strength.
- Freestanding installation. Unit can be bolted to the ground for theft and vandalism deterrence. A false bottom is included to cover the bolts inside the vault.



Product Specifications (out of package)

- Dimensions: 19" W x 43.205" H x 27.54" D
- Weight: 80 Lbs.
- Capacity: Extra Large
- Approximate Maximum Ballot or Letter Size Dimensions: 11" W x 2" H x 12" D